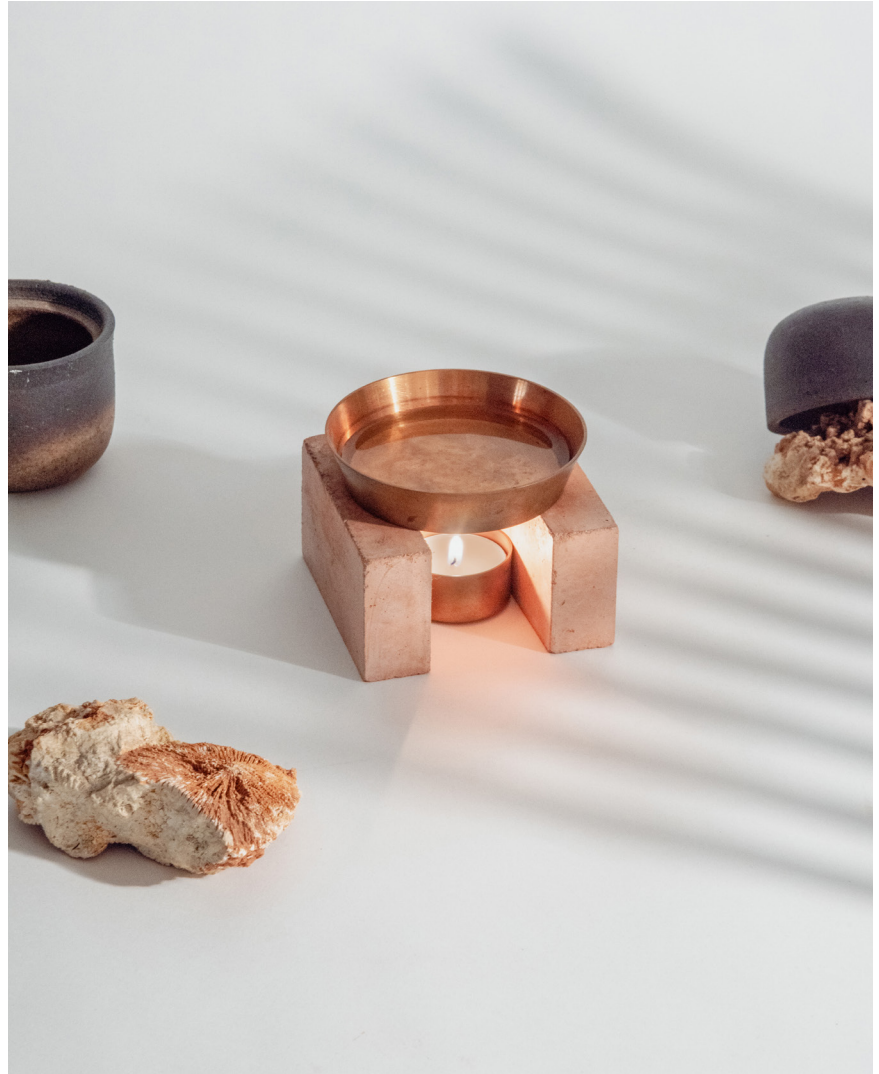
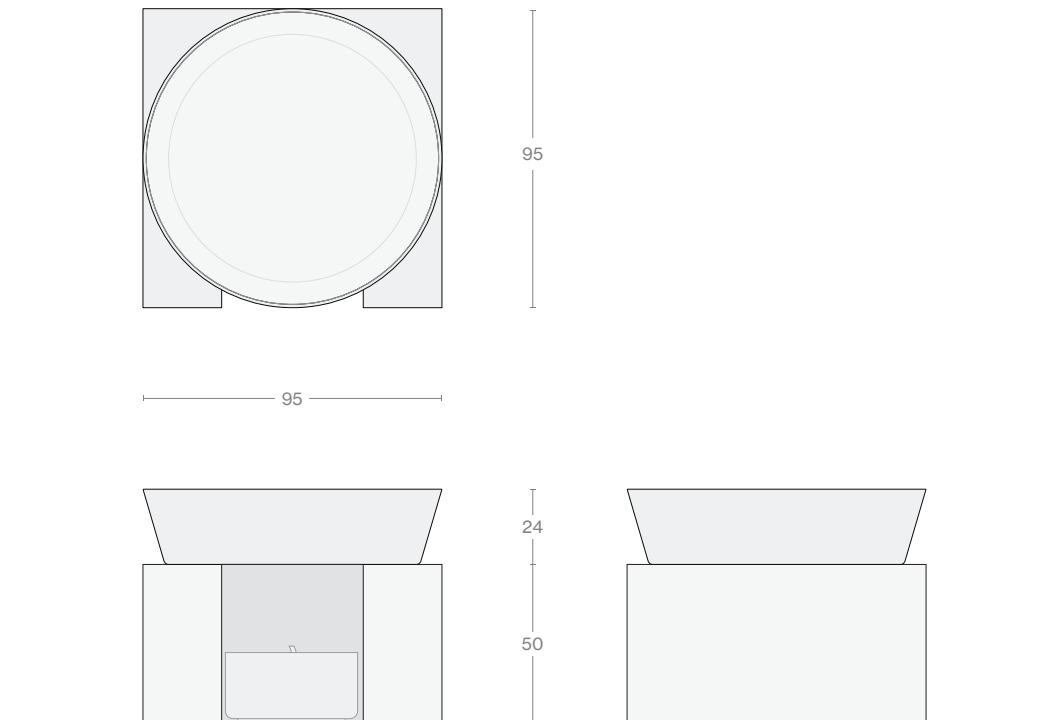


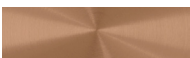
Chulha
Oil Diffuser

Hand made with slaked lime and recycled terracotta, each oil diffuser base is finished with locally sourced beeswax. A tea light placed below a copper vessel gently warms the water and essential oil above, releasing a soft glow and a subtle fragrance.



Dimensions (in mm)**Material & Finish***Body*

Composite Lime,
Waxed

Basin

Copper, Satin

Use & Care

Handle the cast lime block with care, it should only be wiped with a dry cloth. Lime is a natural material and small imperfections in the lime are part of the unique beauty.

Your Chulha may get hot with extended use. Please handle with care, and keep out of reach of children during storage and use.

For more details, please refer to our [material care guide](#).